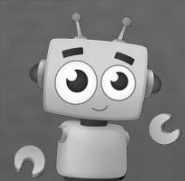




ADITYA SILVER OAK INSTITUTE OF TECHNOLOGY
(Computer Engineering)



INDUSTRIAL VISIT

ADANI MUNDRA PORT



ADITYA SILVER OAK INSTITUTE OF TECHNOLOGY
(Computer Engineering)



VOLUME NO.: 2

ISSUE NO.: 6

ISSUE DATE: 31/12/2018

BITS & BYTES

A DEPARTMENTAL NEWSLETTER



DR. PINA BHATT
PRINCIPAL



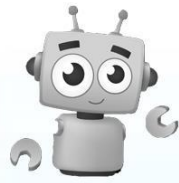
DR. IRVIN SINGH DUA
HOD

--: EDITORIAL TEAM :-

DESIGNER
TEJAS KATESHIYA
ASHWINI PATIL

CHIEF EDITOR
PROF. NAMITA PATEL
PROF. MANISH SINGH





I N D E X

VISION & MISSION

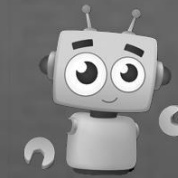
PEO's

PO's

ORIENTATION PROGRAMME

EXPERT TALK

INDUSTRIAL VISIT
ADANI-REPORT



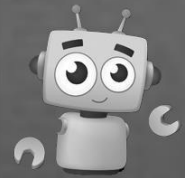
INDUSTRIAL VISIT

DATE: 17/09/2018 , 18/09/2018

THE MUNDRA PORT OFFERS 21 CLOSED DOCKSIDE WAREHOUSES WITH CAPACITY FOR 137 THOUSAND SQUARE METERS TO STORE WHEAT, SUGAR, RICE, FERTILIZER AND FERTILIZER RAW MATERIALS, AND DE-OILED CAKES. THE PORT OFFERS 880 THOUSAND SQUARE METERS OF OPEN STORAGE FOR STEEL SHEETS, COILS, PLATE, CLINKER, SCRAP, SALT, COKE, BENTONITE, AND COAL. AN ADDITIONAL 26 THOUSAND SQUARE METERS OF OPEN STORAGE IS AVAILABLE ALONGSIDE THE RAILWAY. THE PORT ALSO OFFERS A WHEAT-CLEANING FACILITY WITH CAPACITY TO HANDLE 1200 METRIC TONS PER DAY



THE REPUBLIC OF KAZAKHSTAN IS CONSIDERING TO BUILD A TERMINAL AT THE MUNDRA PORT TO PROVIDE INDIAN GOODS DIRECT ACCESS TO CENTRAL ASIA VIA THE IRAN-TURK-MENISTAN-KAZAKHSTAN RAILWAY LINE. THE PORT OF MUNDRA'S BASIN ON THE SOUTH SIDE OF NAVINAL ISLAND WILL BE DEVELOPED IN TWO PHASES TO ENHANCE THE CHORKAR-MAS. THE CURRENT CAPACITY OF PORT TO HANDLE 2.5 M TEU'S IS TO BE EXPANDED TO 5 M TEU BY 2015.



INDUSTRIAL VISIT

DATE: 17/09/2018 , 18/09/2018

Department of Computer Engineering had organized a visit to ADANI MUNDRA PORT for students of 5th semester.

Subject :

To visit ADANI MUNDRA MULTI OPERATING PORT, ADANI WILMAR Ltd. , ADANI POWER PLANT, ADANI VIEW POINT



Faculty Co-ordinators :

VISIT ARRANGEMENT

1. Prof. Jalpa Shah

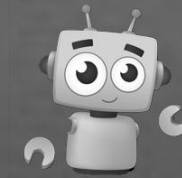
VISIT OFFICIALS

1. Prof. Samarth Modi

2. Prof. Nishi Patel

Location :

MUNDRA PORT, KUTCH



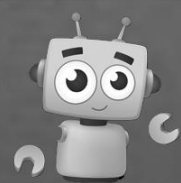
VISION & MISSION

VISION

TO CREATE COMPETENT PROFESSIONALS IN THE FIELD OF COMPUTER ENGINEERING AND PROMOTE RESEARCH WITH A MOTIVE TO SERVE AS A VALUABLE RESOURCE FOR THE IT INDUSTRY AND SOCIETY.

MISSION

1. TO PRODUCE TECHNICALLY COMPETENT AND ETHICALLY SOUND COMPUTER ENGINEERING PROFESSIONALS BY IMPARTING QUALITY EDUCATION, TRAINING, HANDS ON EXPERIENCE AND VALUE BASED EDUCATION.
2. TO INCULCATE ETHICAL ATTITUDE, SENSE OF RESPONSIBILITY TOWARDS SOCIETY AND LEADERSHIP ABILITY REQUIRED FOR A RESPONSIBLE PROFESSIONAL COMPUTER ENGINEER.
3. TO PURSUE CREATIVE RESEARCH, ADAPT TO RAPIDLY CHANGING TECHNOLOGIES AND PROMOTE SELF-LEARNING APPROACH IN COMPUTER ENGINEERING AND ACROSS DISCIPLINES TO SERVE THE DYNAMIC NEEDS OF INDUSTRY, GOVERNMENT AND SOCIETY.



PEO's & PO's

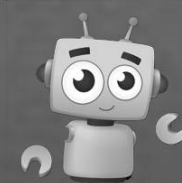
PROGRAM EDUCATIONAL OBJECTIVES (PEO):

PEO1: TO PROVIDE THE FUNDAMENTALS OF SCIENCE, MATHEMATICS, ELECTRONICS AND COMPUTER SCIENCE AND ENGINEERING AND SKILLS NECESSARY FOR A SUCCESSFUL IT PROFESSIONAL.

PEO2: TO PROVIDE SCOPE TO LEARN, APPLY SKILLS, TECHNIQUES AND COMPETENCY TO USE MODERN ENGINEERING TOOLS TO SOLVE COMPUTATIONAL PROBLEMS.

PEO3: TO ENABLE YOUNG GRADUATES TO ADAPT TO THE CHALLENGES OF EVOLVING CAREER OPPORTUNITIES IN THEIR CHOSEN FIELDS OF CAREER INCLUDING HIGHER STUDIES, RESEARCH AVENUES, ENTREPRENEURIAL ACTIVITIES ETC.

PEO4: TO INCULCATE LIFE-LONG LEARNING APTITUDE, LEADERSHIP QUALITIES AND TEAMWORK ABILITY WITH SENSE OF ETHICS FOR A SUCCESSFUL PROFESSIONAL CAREER IN THEIR CHOSEN FIELD.



EXPERT TALKS ON "POWER BI"

DATE: 05/09/2018

EXPERT NAME: MR.VIVEK PATEL,
MICROSOFT MVP (DATA PLATFORM),
COMMUNITY LEADER-TORONTO POWER BI
TARGETED AUDIENCE:

3RD CE AND 5TH CE STUDENTS.

NO. OF STUDENTS PRESENT: 100 STUDENTS

TIME: 10:00 AM TO 11:30 AM

VENUE : NEWTON HALL, 4TH FLOOR,
D BUILDING



OBJECTIVES OF EXPERT TALK:

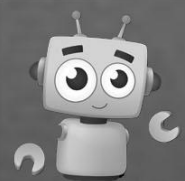
- TO BE AWARE ABOUT POWER BI
- HOW POWER BI CAN BE USEFUL FOR EVERY DEPARTMENT WITHIN YOUR ORGANIZATION
- HOW POWER BI BRINGS



LEARNING OUTCOMES:

- STUDENTS WERE ABLE TO LEARN THE BASICS OF BIG DATA
- WHAT IS ROLE OF BUSINESS ANALYST
- FEATURES OF POWER BI
- FUTURE OF BI





ORIENTATION PROGRAMME

DATE : 17/12/2018

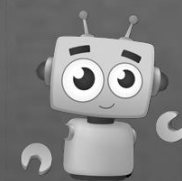
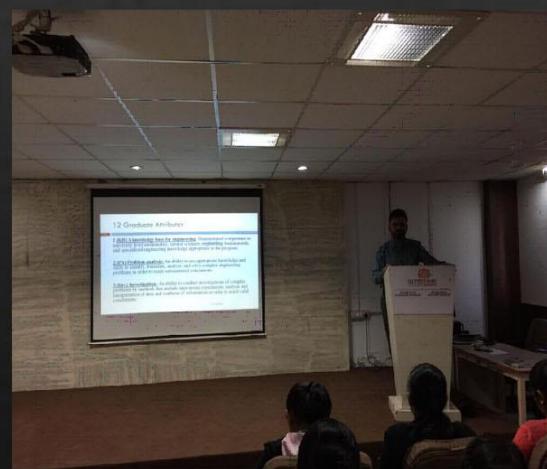
VENUE :
NEWTON HALL, D BLOCK

THE PURPOSE OF ORIENTATION PROGRAMME IS TO HELP THE STUDENTS TO GET STARTED AT THE NEW SEMESTER. PROVIDE DIRECTION AND INFORMATION TO STUDENTS THAT WILL BE HELPFUL IN THE NEW SEMESTER. PREPARE STUDENTS FOR THE NEW THINGS AND THE ACADEMIC PROCESS. ASSIST STUDENTS IN MAKING THE SMOOTHEST TRANSITION POSSIBLE.

EXTRA LOGIC BUILDING SESSION ARRANGED FOR 4TH AND 6TH SEM STUDENTS WAS BRIEFLY EXPLAINED BY PROF. SAGAR PATEL.



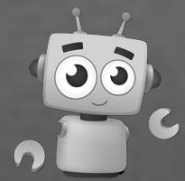
ORIENTATION PROGRAMME WAS HOSTED BY PROF. NAMITA PATEL . ORIENTATION PROGRAMME STARTED WITH BRIEF EXPLANATION ABOUT ORIENTATION PURPOSE, DEPARTMENT MISSION AND CLASS COUNSELLORS OF ALL UPCOMING SEMESTER.



PEO's & PO's

PROGRAM OUTCOMES (POs) :

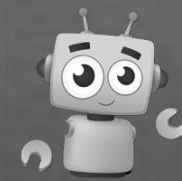
1. **ENGINEERING KNOWLEDGE:** APPLY THE KNOWLEDGE OF MATHEMATICS, SCIENCE, ENGINEERING FUNDAMENTALS AND AN ENGINEERING SPECIALIZATION TO THE SOLUTION OF COMPLEX ENGINEERING PROBLEMS.
2. **PROBLEM ANALYSIS:** IDENTIFY, FORMULATE, REVIEW RESEARCH LITERATURE, AND ANALYSE COMPLEX ENGINEERING PROBLEMS REACHING SUBSTANTIATED CONCLUSIONS USING FIRST PRINCIPLES OF MATHEMATICS, NATURAL SCIENCES AND ENGINEERING SCIENCES.
3. **DESIGN/DEVELOPMENT OF SOLUTIONS:** DESIGN SOLUTIONS FOR COMPLEX ENGINEERING PROBLEMS AND DESIGN SYSTEM COMPONENTS OR PROCESSES THAT MEET THE SPECIFIED NEEDS WITH APPROPRIATE CONSIDERATION FOR THE PUBLIC HEALTH AND SAFETY, AND THE CULTURAL, SOCIETAL, AND ENVIRONMENTAL CONSIDERATIONS.
4. **CONDUCT INVESTIGATIONS OF COMPLEX PROBLEMS:** USE RESEARCH-BASED KNOWLEDGE AND RESEARCH METHODS INCLUDING DESIGN OF EXPERIMENTS, ANALYSIS AND INTERPRETATION OF DATA, AND SYNTHESIS OF THE INFORMATION TO PROVIDE VALID CONCLUSIONS.



PEO's & PO's

PROGRAM OUTCOMES (POs) :

5. MODERN TOOL USAGE: CREATE, SELECT, AND APPLY APPROPRIATE TECHNIQUES, RESOURCES, AND MODERN ENGINEERING AND IT TOOLS INCLUDING PREDICTION AND MODELING TO COMPLEX ENGINEERING ACTIVITIES WITH AN UNDERSTANDING OF THE LIMITATIONS.
6. THE ENGINEER AND SOCIETY: APPLY REASONING INFORMED BY THE CONTEXTUAL KNOWLEDGE TO ASSESS SOCIETAL, HEALTH, SAFETY, LEGAL AND CULTURAL ISSUES AND THE CONSEQUENT RESPONSIBILITIES RELEVANT TO THE PROFESSIONAL ENGINEERING PRACTICE.
7. ENVIRONMENT AND SUSTAINABILITY: UNDERSTAND THE IMPACT OF THE PROFESSIONAL ENGINEERING SOLUTIONS IN SOCIETAL AND ENVIRONMENTAL CONTEXTS, AND DEMONSTRATE THE KNOWLEDGE OF, AND NEED FOR SUSTAINABLE DEVELOPMENT.
8. ETHICS: APPLY ETHICAL PRINCIPLES AND COMMIT TO PROFESSIONAL ETHICS AND RESPONSIBILITIES AND NORMS OF THE ENGINEERING PRACTICE.



PEO's & PO's

PROGRAM OUTCOMES (POs) :

09. INDIVIDUAL AND TEAM WORK: FUNCTION EFFECTIVELY AS AN INDIVIDUAL, AND AS A MEMBER OR LEADER IN DIVERSE TEAMS, AND IN MULTIDISCIPLINARY SETTINGS.
10. COMMUNICATION: COMMUNICATE EFFECTIVELY ON COMPLEX ENGINEERING ACTIVITIES WITH THE ENGINEERING COMMUNITY AND WITH SOCIETY AT LARGE, SUCH AS, BEING ABLE TO COMPREHEND AND WRITE EFFECTIVE REPORTS AND DESIGN DOCUMENTATION, MAKE EFFECTIVE PRESENTATIONS, AND GIVE AND RECEIVE CLEAR INSTRUCTIONS.
11. PROJECT MANAGEMENT AND FINANCE: DEMONSTRATE KNOWLEDGE AND UNDERSTANDING OF THE ENGINEERING AND MANAGEMENT PRINCIPLES AND APPLY THESE TO ONE'S OWN WORK, AS A MEMBER AND LEADER IN A TEAM TO MANAGE PROJECTS AND IN MULTIDISCIPLINARY ENVIRONMENTS.
12. LIFE-LONG LEARNING: RECOGNIZE THE NEED FOR, AND HAVE THE PREPARATION AND ABILITY TO ENGAGE IN INDEPENDENT AND LIFE-LONG LEARNING IN THE BROADEST CONTEXT OF TECHNOLOGICAL CHANGE.